

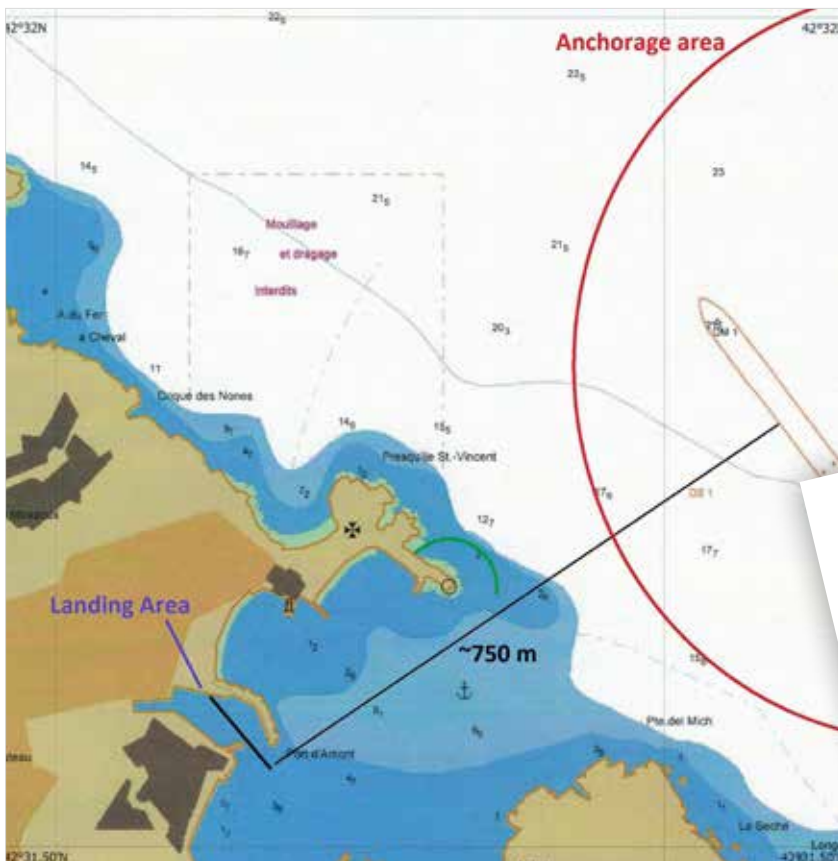
NAUTICAL INFORMATION COLLIOURE

PORT'S APPROACH

Lat : 42°31,6 N - Long : 003°05.13 E



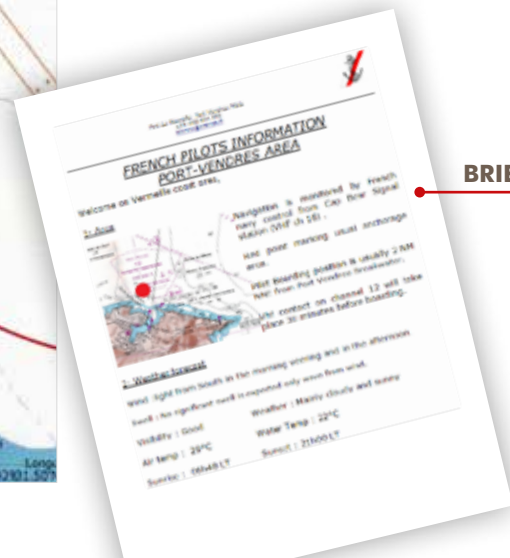
ANCHORAGE AREA



- Final Anchoring position is to be agreed between Captain and Pilot considering existing conditions*.
- Distance between the anchoring position and the tender berth : Less than 1 Nautical Mile.
- Your own tenders can be used.

ADVERSE WEATHER CONDITIONS

3 days before arrival, Pilot will pass main nautical information by mail to the Captain. Pilot will comment the expected conditions and advise the Captain about best options.



BRIEFING PILOT

ALTERNATIVES ANCHORAGES

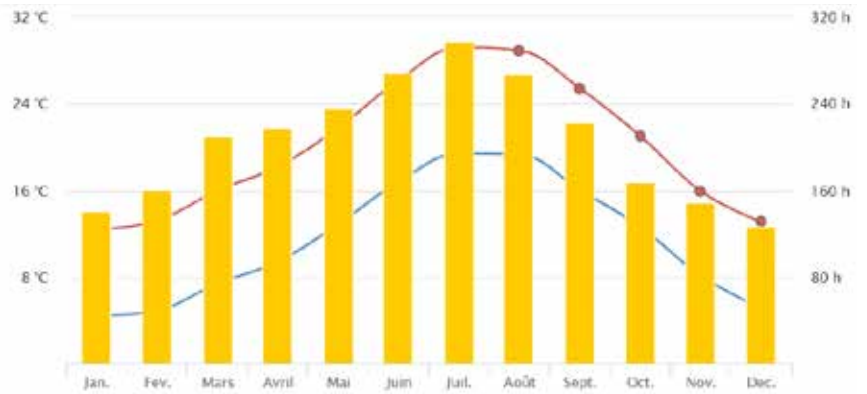


ANCHORAGE AREA INFORMATION

MORE INFORMATION



Syndicat Professionnel des Pilotes Maritimes
de Port La Nouvelle Port-Vendres
Tel +33 468 404 350
Email : pilonov@orange.fr
<https://sites.google.com/site/pilonov/Pilotage>



COORDINATES	WIND	INFORMATION OF BERTH
Lat : 42°31,6 N - Long : 003°05.13 E	Prevailing wind : N-W Weather briefing by pilot 3 days before	1 berth 25 m length ; max draft 2 m
ANCHORAGE	DISTANCES FROM PORT	SERVICES
<ul style="list-style-type: none"> • Anchorage position (I&L) : to be defined Captain and Pilot • Length limitation : no • Maximum draft : no • Minimum depth of anchorage : 20 m • Type of bottom : sand & mud • Distance anchorage area to pier : 750 m 	<ul style="list-style-type: none"> • Pier to town : 50 m • To nearest airport : 38 km • To nearest train station : 750 m 	<ul style="list-style-type: none"> • Security measures : Check point ISPS + fences • Pilotage (compulsory) : yes • Customs immigration and health : when appropriate • Lighting : yes • Waste disposal : yes • Bus park : yes • Taxi rank : yes