

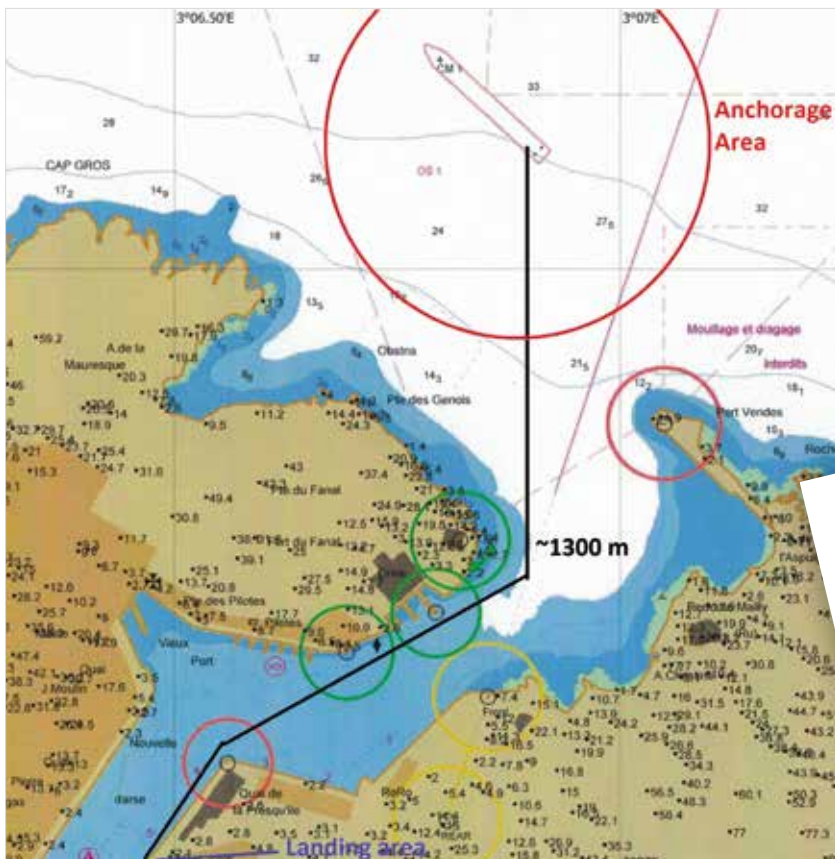
# NAUTICAL INFORMATION PORT-VENDRES

## PORT'S APPROACH

Lat : 42°31,1 N - Long : 003°06,5 E



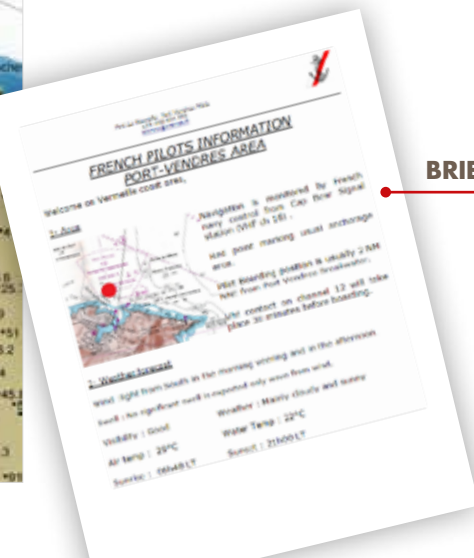
## ANCHORAGE AREA



- Final Anchoring position is to be agreed between Captain and Pilot considering existing conditions\*.
- Distance between the anchoring position and the tender berth : Less than 1 Nautical Mile.
- Your own tenders can be used.

### ADVERSE WEATHER CONDITIONS

3 days before arrival, Pilot will pass main nautical information by mail to the Captain. Pilot will comment the expected conditions and advise the Captain about best options.



**BRIEFING PILOT**

## ALTERNATIVES ANCHORAGES



We can offer another anchorage areas in :

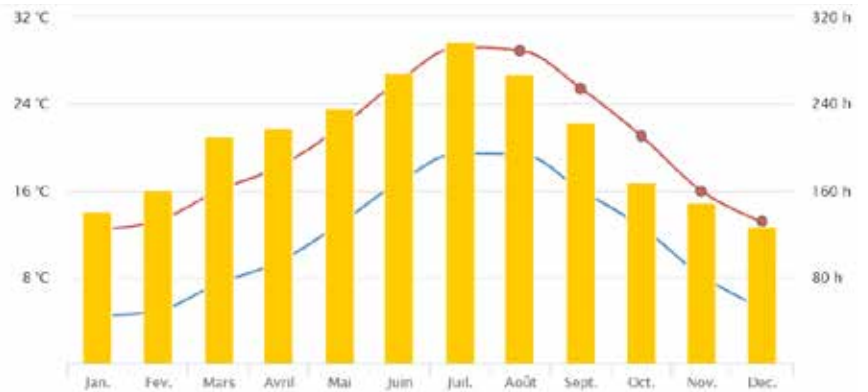
- Argelès-Sur-Mer : Anchorage position 2,5 NM away from Port Vendres anchorage
- Collioure : Anchorage position 1 NM away from Port Vendres anchorage

## ANCHORAGE AREA INFORMATION

### MORE INFORMATION



Syndicat Professionnel des Pilotes Maritimes  
de Port La Nouvelle Port-Vendres  
Tel +33 468 404 350  
Email : [pilonov@gmail.com](mailto:pilonov@gmail.com)  
<https://sites.google.com/site/pilonov/Pilotage>



TOURISM	WIND	INFORMATION OF BERTH
Tourisme board information for passengers & tailored services	Prevailing wind : N-W Weather briefing by pilot 3 days before	1 berth 200 m length ; max draft 8 m
ANCHORAGE	DISTANCES FROM PORT	SERVICES
<ul style="list-style-type: none"> <li>• Anchorage position (I&amp;L) : to be defined Captain and Pilot</li> <li>• Length limitation : no</li> <li>• Maximum draft : no</li> <li>• Minimum depth of anchorage : 30 m</li> <li>• Type of bottom : sand &amp; mud</li> <li>• Distance anchorage area to pier : 1400 m abt</li> </ul>	<ul style="list-style-type: none"> <li>• Pier to town : 100 m</li> <li>• To nearest airport : 33 km</li> <li>• To nearest train station : 3 km</li> </ul>	<ul style="list-style-type: none"> <li>• Security measures : Check point ISPS + fences</li> <li>• Pilotage (compulsory) : yes</li> <li>• Customs immigration and health : when appropriate</li> <li>• Lighting : yes</li> <li>• Waste disposal : yes</li> <li>• Bus park : yes</li> <li>• Taxi rank : on request only</li> </ul>

Club des croisières Port-Vendres / Côte Vermeille  
Quai de la Presqu'île BP37 - 66664 Port-Vendres Cedex France  
Phone +33(0) 468 820 025 - Mobile phone +33(0) 623 602 585  
[contact@cruises-cotevermeille.com](mailto:contact@cruises-cotevermeille.com)

[www.cruises-cotevermeille.com](http://www.cruises-cotevermeille.com)

